

STRATA **RETRACTABLE** **HOSE** **REELERS**

Operation and Instruction Manual for Self-retracting Reeler

IMPORTANT:
Read this manual
carefully before
installing, operating or
servicing this equipment

Manufacturer:

Strata Group Aust Pty Ltd

Unit 1/29 Binney Road
KINGS PARK NSW 2148
Australia

Phone: 61 2 9621 8988

Fax: 61 2 9621 7688

Email: sales@strata-aust.com.au

Website: www.strata-aust.com.au



Leaders in the Reel World!

Declaration of Conformity

We,

STRATA Group Aust Pty Ltd
Unit 1/29 Binney Road
Kings Park NSW 2148 Australia
Phone: (61) 2 9621 8988
Fax: (61) 2 9621 7688

Declare under our sole responsibility that the product

STRATA Retractable Hose Reelers

To which this declaration relates is in conformity with the following documents.

Strata Design Specification and Acceptance Criteria

Following the provisions of

98/37/EC (Machinery Directive)

The Technical Construction File is maintained at the following addresses:

- | | |
|-------------------------------------|--|
| 1. Strata Group Aust Pty Ltd | 2. Reelcraft International Inc. |
| Unit 1/29 Binney Road | Kemreactorstraat 17 |
| Kings Park NSW 2148 | 3903-LG Veenendaal |
| Australia | The Netherlands |

The authorised representative located within the Community is:

REELCRAFT INTERNATIONAL INC.
Kemreactorstraat 17
3903-LG Veenendaal The Netherlands
Phone: 31 318 552053
Fax: 31 318 552131

Table of Contents

Section 1

SAFETY PRECAUTIONS (Read Before Using)

1-1 Symbol use

Section 2

INSTALLATION

2-1 Specifications

2-2 Mounting instructions

2-3 Connecting the inlet supply to the reel

Section 3

OPERATION

3-1 Operation instructions

Section 4

MAINTENANCE, TROUBLESHOOTING & SERVICING

4-1 Servicing details

4-2 Periodic maintenance checks

4-3 Troubleshooting and fault finding

Section 5

WARRANTY TERMS & CONDITIONS

Section 1

SAFETY PRECAUTIONS – (Read Before Using) 1-1 Symbol usage



Means warning! Watch out! There are possible hazards with this procedure! Possible hazards are shown by attached labels.



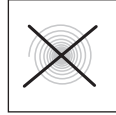
Means warning! Do not remove fasteners or service without contacting an approved service centre.



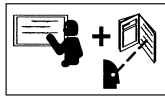
Means do not remove approved service agents only.



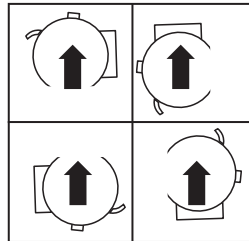
Means warning moving parts keep away from moving parts and pinch points.



Means warning under tension, this area contains a tensioned spring.



Means consult the service centre or become trained and read the service manual.



Means all positional mounting.



Means do not allow the hose to retract uncontrolled.

NOTE: Please refer to your local authority for rules and regulations on the safe use of compressed liquids, gases and fuel gases.

Section 2

INSTALLATION

2-1 Specifications

| Part No. | Usage | Hose Length | Hose Diameter | Max Working Pressure | Max Working Temp °C |
|-------------|----------------------------|-------------|----------------------------------|----------------------|---------------------|
| RAA/W10 | Air or Water | 20m | 10mm | 240psi | -15 +60 |
| RAA/W12 | Air or Water | 18m | 12mm | 240psi | -15 +60 |
| RAHPA/W | High Pressure Air or Water | 10m | 10mm | 1500psi | -40 +100 |
| RAAIRD | Breathing Air | 20m | 10mm | 240psi | -5 +60 |
| RAHW | Hot Water Washdown | 15m | 12mm | 240psi | -30 +85 |
| RAPW | Potable (Drinking) Water | 15m | 12mm | 200psi | -5 +60 |
| ROOA | Oxy – Acetylene | 15m | Twin 5mm | 300psi | -20 +80 |
| ROOP | Oxy – Propane | 15m | Twin 5mm | 300psi | -20 +80 |
| RAPRO | Propane | 20m | 6mm | 390psi | -20 +80 |
| RAPRO10 | Propane | 15m | 10mm | 390psi | -20 +80 |
| RAARGON | Argon | 20m | 6mm | 300psi | -20 +80 |
| RAWP | Chemical | 15m | 12mm | 240psi | -5 +60 |
| RAOIL10 | Oil (low pressure) | 10m | 10mm | 400psi | -40 +100 |
| RAOIL12 | Oil (low pressure) | 10m | 12mm | 400psi | -40 +100 |
| RAFOOD | Nitrogen/CO ² | 20m | 10mm | 240psi | -30 +90 |
| RANITROGEN | Nitrogen High Pressure | 10m | 10mm | 3000psi | -40 +100 |
| RAVAC10 | Vacuum | 15m | 10mm | 24 HG | -5 +60 |
| RAPOWER10 | Electrical Cable Reel | 20m | 15amp H/D cable 240VAC 15amp max | | |
| RALIGHT | Inspection Lead Light | 20m | 240/32vac 11 watt Fluro Tube | | |
| ECONOAIR8 | Compressed Air | 20m | 8mm | 240psi | -15+60 |
| ECONOAIR10 | Compressed Air | 60m | 10mm | 240psi | -15+60 |
| ECONOWATER | Domestic Water | 16m | 10mm | 240psi | -5+60 |
| ECONOHOTW10 | Hot Wash | 16m | 10mm | 240psi | -15+60 |
| ECONOCHEM | Chemical | 16m | 10mm | 240psi | -5+60 |
| ECONOAO8 | Oxy-Acetylene | 8m | 6mm | 300psi | -20+80 |
| ECONOWIND | Hand Wind Air or Water | 30m | 10mm | n/a | n/a |



Use only within the designed specifications

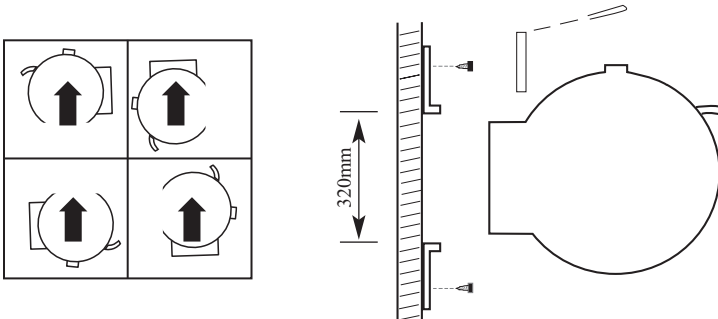
2-2 Mounting instructions

Your hose reel has been supplied complete with the wall-mounting bracket, which consists of two angle brackets and an aluminium axle tube and two split pins.

The two angle brackets are to be fixed in position by using the appropriate fastener for the material that you are mounting the reeler to. These brackets are fixed in place as shown in the drawing below.

Once you have fixed these brackets in place lift your reeler into position as shown in the drawing below. Slide the axle tube into place.

Once you have positioned the axle tube then fit the two slip pins to secure the tube.



2-3 Connecting the inlet supply

Using the appropriate approved hose and fittings connect the supply line to the reel via a flexible hose.

Once you have installed the inlet connection ensure that you have connected the appropriate tool or fitting to the outlet end, ensure the tool or equipment is turned off and slowly turn the valve on to allow the line to become full and check for leaks.

Please refer to your local authorities rules and regulations for safe use and handling of compressed gases, liquids and fuel gases when using your hose reeler.

Use appropriate thread sealant and fittings on all connections, **do not under or over tighten fittings.**

Section 3

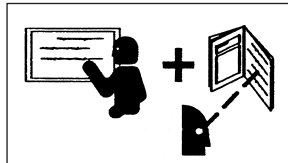
OPERATION

3-1 Operating Instructions

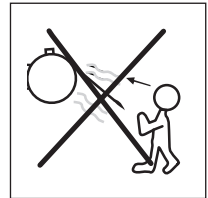
The function of the self-retracting hose reel is quite simple and we hope that you will enjoy many years of safe and practical use.

To use the reel simply pull out the required length of hose out, you will note a clicking noise; this is the locking pawl rotating around the locking ratchet. When ever you hear this noise while pulling the hose out, the hose can be locked in position by simply allowing the hose to retract a little and it will lock in place. If the hose does not lock in place pull more hose out until you hear the clicking noise and allow it to retract a little. You might want to practice this a few times so that you become familiar with the operation.

To get the hose to rewind pull the hose out a little more and allow it to rewind, if it locks in position again pull more hose out and allow it to rewind.



NOTE: Do not allow the hose to retract uncontrolled



Section 4

MAINTENANCE, TROUBLESHOOTING & SERVICING

4-1 Servicing Details

All service and repair work should be referred to and authorised service centre please refer to your point of purchase for a listing of service centres.

4-2 Periodic Maintenance Checks



We recommend that you service the O rings at regular intervals at least once every twelve months and more frequent on the fuel gas reels. Please contact your service centre.

We recommend that you periodically check for leaks in the line and fitting.

Do not lubricate “O” Rings or components being used with oxygen or fuel gas. Check with your local authorities for correct lubrication material.

4-3 Troubleshooting and Fault Finding

WILL NOT LOCK

consult your service centre

**LEAKING
INTERNALLY**

consult your service centre

HOSE HAS PERISHED

consult your service centre

**HOSE WILL NOT RETRACT
NO TENSION ON THE HOSE**

broken spring, contact your service centre

**HOSE PULLS OUT BUT
DOESN'T GO BACK**

broken spring, contact your service centre

Section 5

LIMITED ONE YEAR WARRANTY

Strata Affirms its product confidence with the following warranty:

All products manufactured by Strata Group Aust Pty Ltd are warranted to be free of defects in material and workmanship for twelve (12) months from date of shipment except hoses. Strata's liability shall be limited to repair or replacement of defective material within the warranty period when returned, freight prepaid, to its plant or to a service depot designated by Strata.

The warranty does not cover damage caused by accident, abuse, or faulty installation. Strata products must be installed and maintained in compliance with the manual of instructions furnished with each reel.

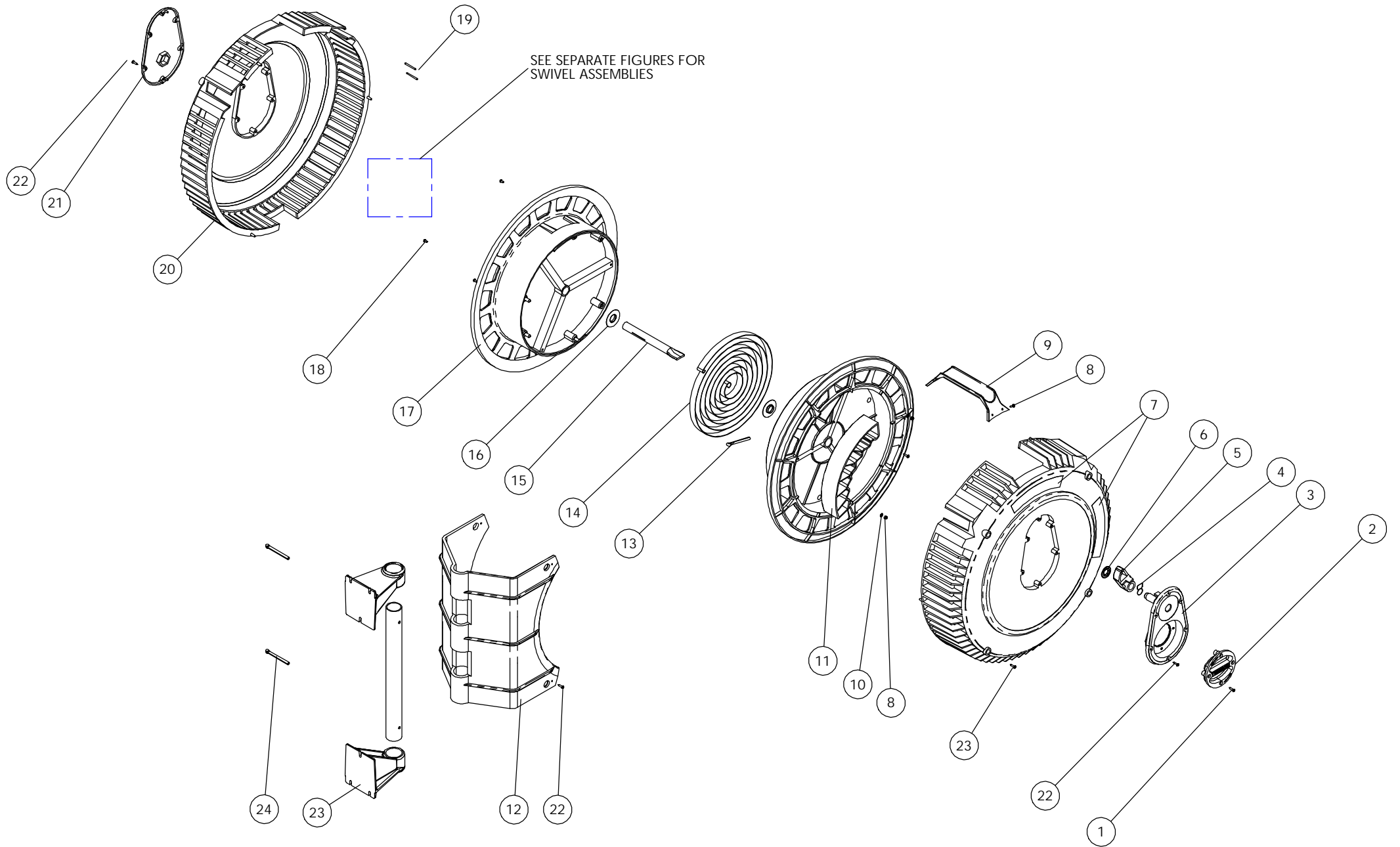


FIGURE 1

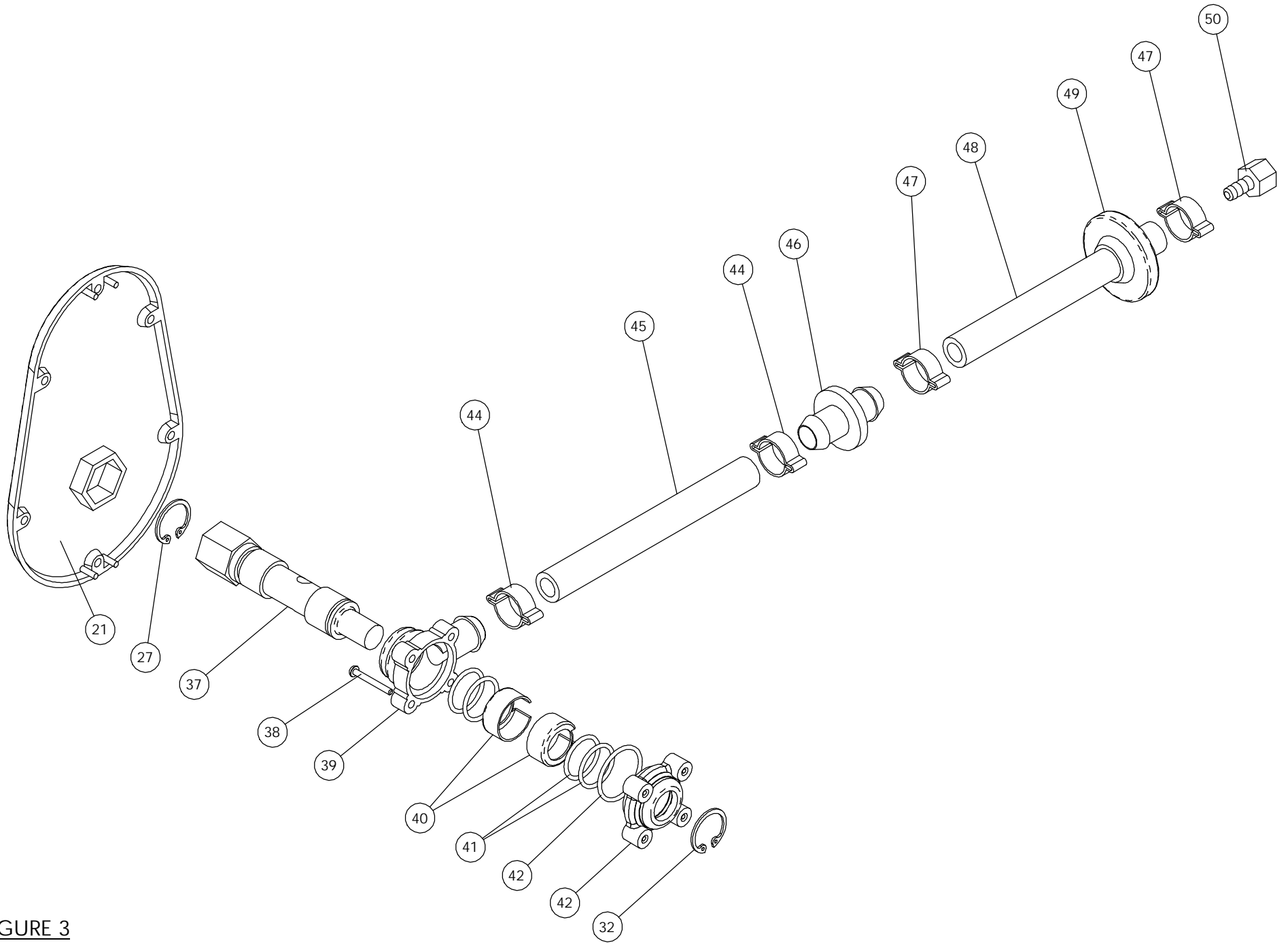


FIGURE 3

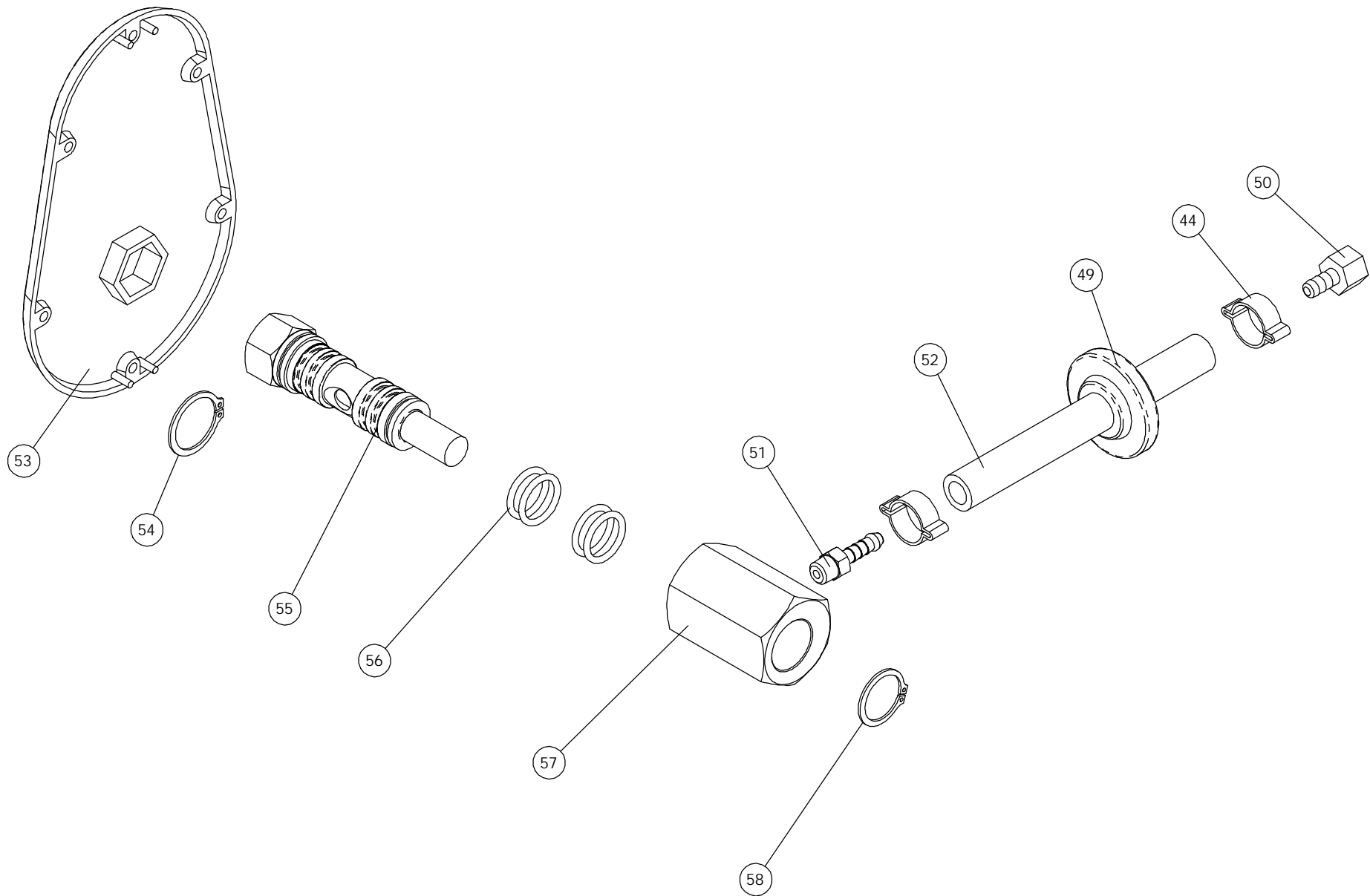


FIGURE 4

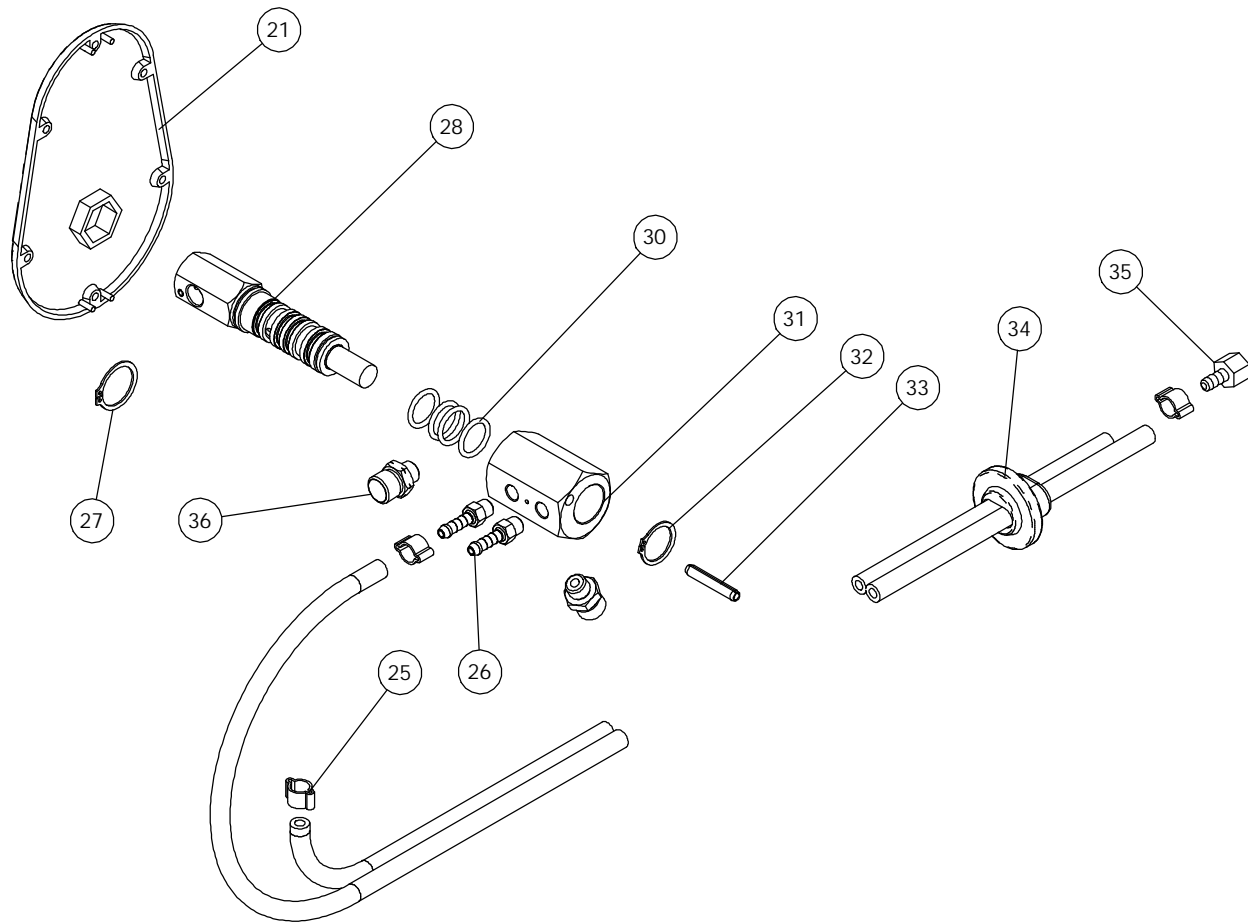


FIGURE 2